

**STATE OF HAWAII
DEPARTMENT OF TRANSPORTATION
HIGHWAYS DIVISION**

**ADDENDUM NO. 2
FOR
WAIMEA CANYON DRIVE/KOKEE ROAD IMPROVEMENTS, PHASE 2A
MILE POST 11.5 TO MILE POST 14.0
PROJECT NO. STP-0550(005)**

The following amendments shall be made to the Bid Documents:

A. SPECIAL PROVISIONS

1. Replace the **TABLE OF CONTENTS**, dated 9/27/22 with the attached **TABLE OF CONTENTS**, dated r10/20/22.
2. Replace **SECTION 102 – BIDDING REQUIREMENTS AND CONDITIONS**, pages 102-1a to 102-8a, dated 3/3/17 with attached Section 102 – BIDDING REQUIREMENTS AND CONDITIONS, pages 102-1a to 102-12a, dated r11/4/22.

B. PROPOSAL

1. Replace **Proposal** page **P-1**, dated r05.13.22 with the attached Proposal pages **P-1**, dated r11/10/22.
2. Replace **Proposal** pages **P-8 to P-10**, dated r11/07/22 with the attached Proposal pages **P-8 to P-10**, dated r11/10/22

C. PLANS

1. Replace plan sheet no. **ADD. 2** dated 11/07/22 with the attached plan sheet No. **ADD. 2** dated 11/10/22.
2. Replace plan sheet No. **ADD. 26** dated 11/07/22 with the attached plan sheet No. **ADD. 26** dated 11/10/22.
3. Replace plan sheet No. **ADD. 27** dated 11/07/22 with the attached plan sheet No. **ADD. 27** dated 11/10/22.
4. Replace plan sheet No. **ADD. 28** dated 11/07/22 with the attached plan sheet No. **ADD. 28** dated 11/10/22.

5. Revise plan sheet **ADD. 52** by adding **Note 19 All red OM-5 object makers shall cover 4 sides of the sign post. All other OM-5 object markers shall cover 3 sides of the sign post facing all directions of traffic.**
6. Add plan sheet No. **ADD 78 S-1** dated 11/10/22 to the plan set.

Please acknowledge receipt of this Addendum No. 2 by recording the date of its receipt in the space provided on page P-4 of the Proposal.



JADE T. BUTAY
Director of Transportation

TABLE OF CONTENTS

Notice To Bidders

Instructions for Contractor’s Licensing

Notice of Requirement for Affirmative Action to Ensure
Equal Employment Opportunity (Executive Order 11246)

Disadvantaged Business Enterprise (DBE) Requirements

Required Federal-Aid Contract Provisions

Special Provisions Title Page

Special Provisions:

DIVISION 100 - GENERAL PROVISIONS		
Section	Description	Pages
101	Terms, Abbreviations, and Definitions	101-1a – 101-13a
102	Bidding Requirements and Conditions	102-1a – 102-12a
103	Award And Execution of Contract	103-1a – 103-5a
104	Scope of Work	104-1a – 104-2a
105	Control of Work	105-1a – 105-4a
106	Material Restrictions and Requirements	106-1a
107	Legal Relations and Responsibility To Public	107-1a – 107-5a
108	Prosecution And Progress	108-1a – 108-25a
109	Measurement and Payment	109-1a – 109-2a

DIVISION 200 - EARTHWORK		
Section	Description	Pages
201	Clearing and Grubbing	201-1a
203	Excavation and Embankment	203-1a – 203-3a
209	Temporary Water Pollution, Dust, and Erosion Control	209-1a – 209-28a

DIVISION 300 – BASES		
Section	Description	Pages
301	Hot Mix Asphalt Base Course	301-1a – 301-2a
305	Aggregate Subbase Course	305-1a

DIVISION 400 – PAVEMENTS		
Section	Description	Pages
401	Hot Mix Asphalt (HMA) Pavement	401-1a – 401-38a
407	Tack Coat	407-1a
415	Cold Planing of Existing Pavement	415-1a

DIVISION 600 - INCIDENTAL CONSTRUCTION		
Section	Description	Pages
606	Guardrail	606-1a – 606-2a
629	Pavement Markings	629-1a – 629-4a
630	Traffic Control Guide Signs	630-1a – 630-3a
631	Traffic Control Regulatory, Warning, and Miscellaneous Signs	631-1a – 631-2a
632	Markers	632-1a
636	E-Construction	636-1a – 636-3a
641	Hydro-Mulch Seeding	641-1a
645	Work Zone Traffic Control	645-1a – 645-2a
671	Protection of Threatened and Endangered Species	671-1a – 671-6a
699	Mobilization	699-1a

DIVISION 700 - MATERIALS		
Section	Description	Pages
702	Bituminous Materials	702-1a
703	Aggregates	703-1a
750	Traffic Control Sign and Marker Materials	750-1 – 750-2
755	Pavement Marking Materials	755-1a

Requirement of Chapter 104, HRS
Wages and Hours of Employees on Public Works Law

Federal Wage Rates

Proposal Title Page

Proposal P-1 – P-7
Proposal Schedule P-8 –P-11

Disadvantaged Business Enterprise (DBE) Contract Goal Verification and Good Faith Efforts (GFE) Documentation For Construction

Disadvantaged Business Enterprise (DBE) Confirmation and Commitment Agreement – Trucking Company

Disadvantaged Business Enterprise (DBE) Confirmation and Commitment Agreement – Subcontractor, Manufacturer, or Supplier

Surety Bid Bond

Sample Forms

Contract

Performance Bond (Surety)

Performance Bond

Labor and Material Payment Bond (Surety)

Labor and Material Payment Bond

Disclosure of Lobbying Activities
Standard Form - LLL and LLL-A

Statement of Compliance
Form WH-348

Chapter 104, HRS Compliance Certificate

END OF TABLE OF CONTENTS

1 Make this section a part of the Standard Specifications:

2
3 **“SECTION 102 - BIDDING REQUIREMENTS AND CONDITIONS**

4
5
6 **102.01 Prequalification of Bidders.** Prospective bidders shall be capable of
7 performing the work for which they are bidding.

8
9 In accordance with HRS Chapter 103D-310, the Department may require
10 any prospective bidder to submit answers to questions contained in the 'Standard
11 Qualification Questionnaire For Prospective Bidders On Public Works Contracts'
12 furnished by the Department, properly executed and notarized, setting forth a
13 complete statement of the experience of such prospective bidder and its
14 organization in performing similar work and a statement of the equipment
15 proposed to be used, together with adequate proof of the availability of such
16 equipment. Whenever it appears to the Department, from answers to the
17 questionnaire or otherwise, that the prospective bidder is not fully qualified and
18 able to perform the intended work, the Department will, after affording the
19 prospective bidder an opportunity to be heard and if still of the opinion that the
20 bidder is not fully qualified to perform the work, refuse to receive or consider any
21 bid offered by the prospective bidder. All information contained in the answers to
22 the questionnaire shall be kept confidential. Questionnaire so submitted shall be
23 returned to the bidders after serving their purpose.

24
25 No person, firm or corporation may bid where (1) the person, firm, or
26 corporation, or (2) a corporation owned substantially by the person, firm, or
27 corporation, or (3) a substantial stockholder or an officer of the corporation, or (4)
28 a partner or substantial investor in the firm is in arrears in payments owed to the
29 State or its political subdivisions or is in default as a surety or failure to do
30 faithfully and diligently previous contracts with the State.

31
32 **102.02 Contents of Proposal Forms.** The Department will furnish
33 prospective bidders with proposal forms posted in HlePRO stating:

- 34
35 (1) The location,
36
37 (2) Description of the proposed work,
38
39 (3) The approximate quantities,
40
41 (4) Items of work to be done or materials to be furnished,
42
43 (5) A schedule of items, and
44
45 (6) The time in which the work shall be completed.
46

47 Papers bound with or attached to the proposal form are part of the
48 proposal. The bidder shall not detach or alter the papers bound with or attached
49 to the proposal when the bidder submits its proposal through HlePRO.
50

51 Also, the bidder shall consider other documents including the plans and
52 specifications a part of the proposal form whether attached or not.
53

54 **102.03 (Unassigned).**
55

56 **102.04 Estimated Quantities.** The quantities shown in the contract are
57 approximate and are for the comparison of bids only. The actual quantity of work
58 may not correspond with the quantities shown in the contract. The Department
59 will make payment to the Contractor for unit price items in accordance with the
60 contract for only the following:
61

62 (1) Actual quantities of work done and accepted, not the estimated
63 quantities; or
64

65 (2) Actual quantities of materials furnished, not the estimated
66 quantities.
67

68 The Department may increase, decrease, or omit each scheduled
69 quantities of work to be done and materials to be furnished. When the
70 Department increases or decreases the estimated quantity of a contract item by
71 more than 15% the Department will make payment for such items in accordance
72 with Subsection 104.06 - Methods of Price Adjustment.
73

74 **102.05 Examination of Contract and Site of Work.** The bidder shall
75 examine carefully the site of the proposed work and contract before submitting a
76 proposal.
77

78 By the act of submitting a bid for the proposed contract, the bidder
79 warrants that:
80

81 (1) The bidder and its Subcontractors have reviewed the contract
82 documents and found them free from ambiguities and sufficient for the
83 purpose intended;
84

85 (2) The bidder and its workers, employees and subcontractors have
86 the skills and experience in the type of work required by the contract
87 documents bid upon;
88

89 (3) Neither the bidder nor its employees, agents, suppliers or
90 subcontractors have relied upon verbal representations from the
91 Department, its employees or agents, including architects, engineers or
92 consultants, in assembling the bid figure; and

93 (4) The basis for the bid figure are solely on the construction contract
94 documents.

95
96 Also, the bidder warrants that the bidder has examined the site of the
97 work. From its investigations, the bidder acknowledges satisfaction on:
98

- 99 (1) The nature and location of the work;
100
101 (2) The character, quality, and quantity of materials;
102
103 (3) The difficulties to be encountered; and
104
105 (4) The kind and amount of equipment and other facilities needed;
106

107 Subsurface information or hydrographic survey data furnished are for the
108 bidders' convenience only. The data and information furnished are the product of
109 the Department's interpretation gathered in investigations made at the specific
110 locations. These conditions may not be typical of conditions at other locations
111 within the project area or that such conditions remain unchanged. Also,
112 conditions found at the time of the subsurface explorations may not be the same
113 conditions when work starts. The bidder shall be solely responsible for
114 assumptions, deductions, or conclusions the bidder may derive from the
115 subsurface information or data furnished.
116

117 If the Engineer determines that the natural conditions differ from that
118 originally anticipated or contemplated by the Contractor in the items of
119 excavation, the State may treat the difference in natural conditions, as falling
120 within the meaning of Subsection 104.02 – Changes.
121

122 **102.06 Preparation of Proposal.** The submittal of its proposal shall be on
123 forms furnished by the Department. The bidder shall specify in words or figures:
124

- 125 (1) A unit price for each pay item with a quantity given;
126
127 (2) The products of the respective unit prices and quantities
128
129 (3) The lump sum amount; and
130
131 (4) The total amount of the proposal obtained by adding the amounts
132 of the several items.
133

134 The words and figures shall be in ink or typed. If a discrepancy occurs
135 between the prices written in words and those written in figures, the prices written
136 in words shall govern.
137

138 When an item in the proposal contains an option to be made, the bidder
139 shall choose in accordance with the contract for that particular item.
140 Determination of an option will not permit the Contractor to choose again.

141
142 The bidder shall sign the proposal properly in ink. A duly authorized
143 representatives of the bidder or by an agent of the bidder legally qualified and
144 acceptable to the Department shall sign, including one or more partners of the
145 bidder and one or more representatives of each entity comprising a joint venture.

146
147 When an agent, other than the officer(s) of a corporation authorized to
148 sign contracts for the corporation or a partner of a partnership, signs the
149 proposals, a 'Power of Attorney' shall be on file with the Department or submitted
150 with the proposal. Otherwise, the Department will reject the proposal as irregular
151 and unauthorized.

152
153 The bidder shall submit acceptable evidence of the authority of the
154 partner, member(s) or officer(s) to sign for the partnership, joint venture, or
155 corporation respectively with the proposal. Otherwise, the Department will reject
156 the proposal as irregular and unauthorized.

157
158 **102.07 Irregular Proposals.** The Department may consider proposals
159 irregular and may reject the proposals for the following reasons:

- 160
161 (1) The proposal is a form not furnished by the Department, altered, or
162 detached;
- 163
164 (2) The proposal contains unauthorized additions, conditions, or
165 alternates. Also, the proposal contains irregularities that may tend to
166 make the proposal incomplete, indefinite, or ambiguous to its meaning;
- 167
168 (3) The bidder adds provisions reserving the right to accept or reject an
169 award. Also, the bidder adds provisions into a contract before an award;
- 170
171 (4) The proposal does not contain a unit price for each pay item listed
172 except authorized optional pay items; and
- 173
174 (5) Prices for some items are out of proportion to the prices for other
175 items.
- 176
177 (6) If in the opinion of the Director, the bidder and its listed
178 subcontractors do not have the Contractor's licenses or combination of
179 Contractor's licenses necessary to complete the work.
- 180

181 Where the prospective bidder is bidding on multiple projects
182 simultaneously and the proposal limits the maximum gross amount of awards
183 that the bidder can accept at one bid letting, the proposal is not irregular if the
184 limit on the gross amount of awards is clear, and the Department selects the
185 awards that can be given.

186
187 **102.08 Proposal Guaranty.** The Department will not consider a proposal of
188 \$25,000 or more unless accompanied by:

189
190 (1) A deposit of legal tender; or

191
192 (2) A valid surety bid bond, underwritten by a company licensed to
193 issue bonds in the State of Hawaii, in the form and composed,
194 substantially, with the same language as provided herewith and signed by
195 both parties; or

196
197 (3) A certificate of deposit, share certificate, cashier's check,
198 treasurer's check, teller's check, or official check drawn by, or a certified
199 check accepted by and payable on demand to the State by a bank,
200 savings institution, or credit union insured by the Federal Deposit
201 Insurance Corporation (FDIC) or the National Credit Union Administration
202 (NCUA).

203
204 (a) The bidder may use these instruments only to a maximum of
205 \$100,000.

206
207 (b) If the required security or bond amount totals over \$100,000
208 more than one instrument not exceeding \$100,000 each and issued
209 by different financial institutions shall be acceptable.

210
211 (c) The instrument shall be made payable at sight to the
212 Department.

213
214 (d) Proposal Guaranty listed in (1) and (3) shall be in its original
215 form, and shall be received at the Contracts Office, Department of
216 Transportation, 869 Punchbowl Street, Honolulu, Hawaii 96813
217 before the bid deadline.

218
219 In accordance with HRS Chapter 103D-323, the above shall be in a sum
220 not less than 5% of the amount bid.

221
222 **102.09 Delivery of Proposal.** The bidder shall submit the proposal in
223 HlePRO. Bids received after said due date and time shall not be considered.
224 Original bid documents do not have to be submitted. Award will be made based
225 on proposals submitted in HlePRO.

227 **102.10 Withdrawal or Revision of Proposals.** A bidder may withdraw or
228 revise a proposal after the bidder submits the proposal in HlePRO. Withdrawal
229 or revision of proposal must be completed before the time set for the receiving of
230 bids.

231
232 **102.11 Public Opening of Proposals.** Not applicable.

233
234 **102.12 Disqualification of Bidders.** The Department may disqualify a bidder
235 and reject its proposal for the following reasons:

236
237 (1) Submittal of more than one proposal whether under the same or
238 different name.

239
240 (2) Evidence of collusion among bidders. The Department will not
241 recognize participants in collusion as bidders for any future work of the
242 Department until such participants are reinstated as qualified bidders.

243
244 (3) Lack of proposal guaranty.

245
246 (4) Submittal of an unsigned or improperly signed proposal.

247
248 (5) Submittal of a proposal without a listing of subcontractors or
249 containing only a partial or incomplete listing of subcontractors.

250
251 (6) Submittal of an irregular proposal in accordance with Subsection
252 102.07 - Irregular Proposals.

253
254 (7) Evidence of assistance from a person who has been an employee
255 of the agency within the preceding two years and who participated while in
256 State office or employment in the matter with which the contract is directly
257 concerned, pursuant to HRS Chapter 84-15.

258
259 (8) Suspended or debarred in accordance with HRS Chapter 104-25.

260
261 (9) Failure to complete the prequalification questionnaire, if applicable.

262
263 (10) Failure to attend the mandatory pre-bid meeting, if applicable.

264
265 **102.13 Material Guaranty.** The successful bidder may be required to furnish
266 a statement of the composition, origin, manufacture of materials, and samples.

267
268 **102.14 Substitution of Materials and Equipment Before Bid Opening.** See
269 Subsection 106.13 for Substitution Of Materials and Equipment After Bid
270 Opening.

271

272
273
274
275
276
277
278
279
280
281
282
283
284
285
286
287
288
289
290
291
292
293
294
295
296
297
298
299
300
301
302
303
304
305
306
307
308
309
310
311
312
313
314
315
316

(A) General. When brand names of materials or equipment are specified in the contract documents, they are to indicate a quality, style, appearance, or performance and not to limit competition. The bidder shall base its bid on one of the specified brand names unless alternate brands are qualified as equal or better in an addendum. Qualification of such proposed alternate brands shall be submitted via email to the Contact person listed in HlePRO for the solicitation and also post a question in HlePRO under the question/answer tab referencing the email with the request. The request must be posted in HlePRO no later than 14 calendar days before the bid opening date, not including the bid opening date.

An addendum will be issued to inform all prospective bidders of any accepted substitution in accordance with Subsection 102.17 – Addenda.

(B) Statement of Variances. The statement of variances must list all features of the proposed substitution that differ from the contract documents and must further certify that the substitution has no other variant features. The brochure and information submitted shall be clearly marked showing make, model, size, options, and any other features requested by the Engineer and must include sufficient evidence to evaluate each feature listed as a variance. A request will be denied if submitted without sufficient evidence. If after installing the substituted product, an unlisted variance is discovered, the Contractor shall immediately replace the product with a specified product at no increase in contract price and contract time.

(C) Substitution Denial. Any substitution request not complying with the above requirements will be denied.

102.15 Bid Adjustment.

(A) Preferences for Apprenticeship Programs. In accordance with ACT 17, SLH 2009 – Apprenticeship Program and the Bipartisan Infrastructure Law Section 25019(a), a 5% bid adjustment for bidders that are parties to apprenticeship agreements pursuant to Hawaii Revised Statutes (HRS) Section 103-55.6 may be applied to the bidder's price for evaluation purposes. These procedures apply to public works projects with an estimated cost of \$250,000 or more and entered into under the provisions of HRS Chapter 103.

The following provisions apply to this Apprenticeship Program.

(1) Definitions.

317
318
319
320
321
322
323
324
325
326
327
328
329
330
331
332
333
334
335
336
337
338
339
340
341
342
343
344
345
346
347
348
349
350
351
352
353
354
355
356
357
358
359
360
361

(a) “Apprenticeable trade”, HRS Section 103-55.6 (c), shall have the same meaning as ‘apprenticeable occupation’ pursuant to Hawaii Administrative Rules (HAR) Section 30-1-5.

(b) “Department” means the department of labor and industrial relations.

(c) “Director” means the director of labor and industrial relations.

(d) “Employ” means the employment of a person in an employer-employee relations.

(e) “Governmental body” means as defined in HRS Section 103D-104.

(f) “Party to an apprenticeship agreement” means party to a registered apprenticeship program with the department of labor and industrial relations.

(g) “Preference” means the 5% by which the qualified bidder’s offer amount would be decreased for evaluation purposes.

(h) “Public work” shall be as defined in HRS Section 104-2 and HAR Section 12-22-1.

(i) “Registered apprenticeship program” means a construction trade program approved by the department pursuant to HAR Section 12-30-1 and Section 12-30-4.

(j) “Sponsor” means an operator of an apprenticeship program and in whose name the program is approved and registered with the department of labor and industrial relations pursuant to HAR Section 12-30-1.

(k) Offeror – Entity/bidder submitting a proposal to undertake a project.

(l) Procurement Officer – Director of Transportation or his authorized representative.

(2) Qualification Procedures.

362
363
364
365
366
367
368
369
370
371
372
373
374
375
376
377
378
379
380
381
382
383
384
385
386
387
388
389
390
391
392
393
394
395
396
397
398
399
400
401
402
403
404
405
406
407

(a) Any bidder seeking the preference must be a party to an apprenticeship agreement registered with the department at the time the offer is made for each apprenticeable trade the bidder will employ to construct the public works projects for which the offer is being made.

1. The apprenticeship agreement shall be registered and conform to the requirements of HRS Chapter 372.

2. Subcontractors do not have to be a party to an apprenticeship agreement for the bidder to obtain the preference.

3. The bidder is not required to have apprentices in its employ at the time of submittal of an offer to qualify for the preference.

(b) The department shall:

1. Develop and maintain a list of construction trades in registered apprenticeship programs which conform to HRS Chapter 372; and

2. Electronically post the list; including any amendments, on the department website (<http://labor.hawaii.gov>).

(c) Bidder is responsible to comply with all submission requirements for registration of its apprenticeship program before requesting a preference.

(d) Bidder shall provide a certification by the sponsor of the respective registered apprenticeship programs covering the relevant trade(s) for the public works project.

(e) *Certification Form 1* issued by the department shall include:

1. Contractor information;

2. Solicitation reference;

3. Trade(s);

4. Date and name of apprenticeship program;

408
409
410
411
412
413
414
415
416
417
418
419
420
421
422
423
424
425
426
427
428
429
430
431
432
433
434
435
436
437
438
439
440
441
442
443
444
445
446
447
448
449
450
451
452
453

5. Signature of authorized training coordinator or training trust fund administrator certifying that the contractor is a participant in the program, and that the program is registered with the department;

6. Contract information for sponsor's authorized representative signing the form;

7. Number of apprentices enrolled in the program, number who successfully completed the apprenticeship program in the past 12 months, including whether the contractor is signatory to a collective bargaining agreement for that trade, or if not, provide for attachment of a copy of the agreement between the contractor and the program.

(3) Solicitation Procedures.

(a) If the NTB indicates that this project is covered by this preference, and the offer is less than \$250,000 this preference will still be applicable in determining the lowest bidder.

(b) A claim for this preference must include the following:

1. Allow bidder seeking to claim the preference to state the trades the bidder will employ to perform the work;

2. For each trade to be employed to perform the work, the bidder shall submit a completed signed original *Certification Form 1* verifying participation in an apprenticeship program registered with the department.

3. The *Certification Form 1* shall be authorized by an apprenticeship sponsor of the department's list of registered apprenticeship programs. The authorization shall be an original signature by an authorized official of the apprenticeship sponsor; and

4. The completed *Certification Form 1* for each trade must be submitted by the bidder with the offer. Previous certifications shall not apply unless allowed by the solicitation.

454
455
456
457
458
459
460
461
462
463
464
465
466
467
468
469
470
471
472
473
474
475
476
477
478
479
480
481
482
483
484
485
486
487
488
489
490
491
492
493
494
495
496
497

(c) Upon receiving *Certification Form 1*, the procurement officer will verify with the department that the apprenticeship program is on the list of apprenticeship programs registered with the department. If the programs are not confirmed by the department, the bidder will not qualify for the preference.

(4) Evaluation and Contract Award.

(a) If the bidder certifies participation in an apprenticeship program for each trade which will be employed by the bidder for the project, the procurement officer shall apply the preference and decrease the bidder's total bid amount by five per cent (5%) for evaluation purposes.

(b) Should the bidder qualify for other statutory preferences (for example, Hawaii products), all applicable preferences shall be applied to the bidder's price.

(c) The contract amount shall be the original offer amount, exclusive of any preference; the preference is only for evaluation purposes.

(d) Any claims challenging a bidder's representation that the bidder is a participant in an apprenticeship program(s) as claimed, shall be submitted to the procurement officer. The procurement officer will refer the challenge to the department of labor and industrial relations who shall investigate any such claims and shall make a determination.

(5) Contract Administration.

(a) For the duration of a contract awarded utilizing the apprenticeship preference, the contractor shall certify each month that work is being conducted on the project, that it continues to be a participant in the relevant apprenticeship program for each trade it employs.

(b) Monthly certification shall be made on *Monthly Certification Form 2* prepared and made available by the department, be a signed original by the respective apprenticeship program sponsors' authorized official, and submitted by the contractor with its monthly payment requests.

498
499
500
501
502
503
504
505
506
507
508
509
510
511
512
513
514
515
516
517
518
519
520
521
522
523
524
525
526
527
528
529
530
531
532
533
534
535
536
537
538
539
540
541
542
543

(c) Should the contractor fail or refuse to submit its monthly certification forms, or at any time during the construction of the project, cease to be a part to a registered apprenticeship agreement for each apprenticeable trades the contractor employs, or will employ, the contractor will be subject to the following sanctions:

1. Withholding of the requested payment until the required form(s) are submitted;
2. Temporary or permanent cessation of work on the project , without recourse to breach of contract claims by the contractor; provided the agency shall be entitled to restitution for nonperformance or liquidated damages claims; or
3. Proceed to debar or suspend pursuant to HRS Section 103D-702.

(d) If events such as “acts of God,” acts of a public enemy, acts of the State or any other governmental body in its sovereign or contractual capacity, fires, floods, epidemics, freight embargoes, unusually severe weather, or strikes or other labor disputes prevent the contractor from submitting the certification forms, the contractor shall not be penalized as provided herein, provided the contractor completely and expeditiously complies with the certification process when the event is over.

102.16 Certification for Safety and Health Program for Bids in excess of \$100,000. In accordance with HRS Chapter 396-18, the bidder or offeror, by signing and submitting this proposal, certifies that a written safety and health plan for this project will be available and implemented by the notice to proceed date for this project. Details of the requirements of this plan may be obtained from the State Department of Labor and Industrial Relations, Occupational Safety and Health Division (HIOSH).

102.17 Addenda. Addenda issued shall become part of the contract documents. Addenda to the bid documents will be provided to all prospective bidders via HIePRO. Each addendum shall be an addition to the contract documents. The terms and requirements of the bid documents (i.e., drawings, specifications and other bid and contract documents) cannot be changed prior to the bid opening except by a duly issued addendum.”

END OF SECTION 102

**PROPOSAL TO THE
STATE OF HAWAII
DEPARTMENT OF TRANSPORTATION**

PROJECT: **Waimea Canyon Drive/Kokee Road Improvements, Phase 2A
Mile Post 11.5 to 14.0
District of Waimea
Island of Kauai**

PROJECT NO.: **STP-0550(005)**

COMPLETION TIME: 250 Working days from the
Start Work Date from the Department.

DBE PROJECT GOAL: 5.7%

DESIGN PROJECT MANAGER:

NAME	Eric Fujikawa
ADDRESS	1720 Haleukana Street, Lihue, Hawaii 96766
PHONE NO.	(808)241-3015
FAX NO.	(808)241-3011

PROPOSAL SCHEDULE

ITEM NO.	ITEM	APPROX. QUANTITY	UNIT	UNIT PRICE	AMOUNT
201.0100	Clearing and Grubbing	2	AC	\$ _____	\$ _____
203.0100	Roadway Excavation	2,400	CY	\$ _____	\$ _____
209.0100	Installation, Maintenance, Monitoring, and Removal of BMP	LS	LS	LS	\$ _____
209.0200	Additional Water Pollution, Dust, and Erosion Control	FA	FA	FA	\$ <u>250,000.00</u>
301.0100	Hot Mix Asphalt Base Course	2,100	TN	\$ _____	\$ _____
305.0100	Aggregate Subbase	1,700	CY	\$ _____	\$ _____
401.0410	PMA Pavement, Mix No. IV	5,200	TN	\$ _____	\$ _____
401.9000	Pavement Smoothness Incentive	Allow	Allow	Allow	\$ <u>3,000.00</u>
414.0110	Excavation of Weakened Pavement Areas	900	CY	\$ _____	\$ _____
415.0110	Cold Planing of Existing Pavement	29,500	SY	\$ _____	\$ _____
603.0100	Clean Existing Culverts	FA	FA	FA	\$ <u>60,000.00</u>
606.2000	31" W-Beam Guardrail with Standard 8" Offset Block, Steel 6-Ft Posts	3,800	LF	\$ _____	\$ _____
606.2008	31" W-Beam Guardrail with Standard 8" Offset Block, Steel 8-Ft Posts, Double Nested with Rubrail	240	LF	\$ _____	\$ _____
606.5000	Terminal Section, MSKT-SP-MGS, SoftStop, Max Tension or Approved Equal	26	EA	\$ _____	\$ _____

PROPOSAL SCHEDULE

ITEM NO.	ITEM	APPROX. QUANTITY	UNIT	UNIT PRICE	AMOUNT
606.5100	Type A End Section	6	EA	\$ _____	\$ _____
629.1010	Double 4-Inch Pavement Striping (Thermoplastic Extrusion)	14,350	LF	\$ _____	\$ _____
629.1020	6-Inch Pavement Striping (Thermoplastic Extrusion)	29,300	LF	\$ _____	\$ _____
629.1050	12-Inch Pavement Striping (Thermoplastic Extrusion)	40	LF	\$ _____	\$ _____
629.2020	Type C Pavement Marker	1,400	EA	\$ _____	\$ _____
629.2030	Type D Pavement Marker	2,800	EA	\$ _____	\$ _____
630.1100	Panel for Destination Sign (Flat Panel)	60	SF	\$ _____	\$ _____
630.1610	4.00 lbs/ft Flanged Channel Post for Destination Sign	4	EA	\$ _____	\$ _____
631.0110	Regulatory Sign (10 Sq. Ft. or Less)	9	EA	\$ _____	\$ _____
631.0230	Warning Sign (10 Sq. Ft. or Less)	12	EA	\$ _____	\$ _____
631.0300	Miscellaneous Sign	10	EA	\$ _____	\$ _____
631.0320	Supplemental Plaque	6	EA	\$ _____	\$ _____
632.0500	Milepost Marker with Post (Bi-Directional)	6	EA	\$ _____	\$ _____
632.0120	Reflector Marker (RM-3) with Steel Post	80	EA	\$ _____	\$ _____
632.0122	Reflector Marker (RM-3) with Flexible Delineator	20	EA	\$ _____	\$ _____

PROPOSAL SCHEDULE

ITEM NO.	ITEM	APPROX. QUANTITY	UNIT	UNIT PRICE	AMOUNT
632.1012	Type II Object Marker (OM2-2H)	35	EA	\$ _____	\$ _____
632.1022	Type II Object Marker (OM2-2V)	18	EA	\$ _____	\$ _____
632.1050	Type V Object Marker (OM-5)	26	EA	\$ _____	\$ _____
636.1000	Additional E-Construction Programs, Additional Licenses or Additional Equipment	FA	FA	FA	\$ <u>10,000.00</u>
641.0100	Hydro-Mulch Seeding	9,680	SY	\$ _____	\$ _____
645.1000	Traffic Control	LS	LS	LS	\$ _____
645.2000	Additional Police Officers, Additional Traffic Control Devices	FA	FA	FA	\$ <u>200,000.00</u>
648.1000	Field Posted Drawing	LS	LS	LS	\$ _____
671.1000	Protection of Threatened and Endangered Species	FA	FA	FA	\$ <u>20,000.00</u>
699.1001	Mobilization (Not to Exceed 6% of the Sum of All Items Excluding the Bid Price of this Item)	LS	LS	LS	\$ _____

a. Sum of All Items \$ _____

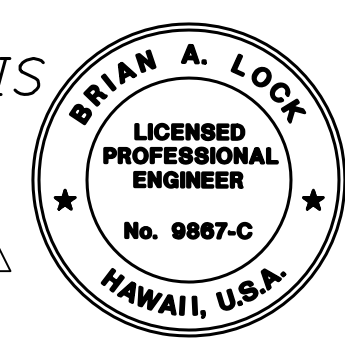
NOTE: Bidders must complete all unit prices and amounts. Failure to do so may be grounds for rejection of bid.
 Bids shall include all Federal, State, County and other applicable taxes and fees.
 The Sum of All Items will be used to determine the lowest responsible bidder.
 If a discrepancy occurs between unit bid price and the bid price, the unit price will govern.

STANDARD PLANS SUMMARY

DIST. NO.	STATE	FED. AID PROJ. NO.	FISCAL YEAR	SHEET NO.	TOTAL SHEETS
KAUAI	HAW.	STP-0550(005)	2022	ADD. 2	127

STANDARD PLAN NO.	TITLE	DATE	STANDARD PLAN NO.	TITLE	DATE	STANDARD PLAN NO.	TITLE	DATE	STANDARD PLAN NO.	TITLE	DATE
B-01 ●	Notes and Miscellaneous Details	05/31/07	H-01A	Type A Catch Basin	05/31/07	TE-09	Bike Route Sign and Supplementary Plates	07/11/08	TE-28A ●	Miscellaneous Pavement Markings	07/11/08
B-03	Backfill Details at Earth Retaining Structures	05/31/07	H-01B	Type B Catch Basin	05/31/07	TE-10	Interstate Route Marker	07/11/08	TE-29 ●	Pavement Arrows and Symbols	07/11/08
B-12	Prestressed Concrete Piles and Compression Splice Can Details	05/31/07	H-01C	Type C Catch Basin	05/31/07	TE-11 ●	State Route Marker and Auxiliary Markers	07/11/08	TE-30 ●	Pavement Alphabets, Numbers and Symbols	07/11/08
B-12A	Prestressed Concrete Piles, Pile and Compression Splice Can Details and Notes	05/31/07	H-01D	Type D Catch Basin	05/31/07	TE-12 ●	State Route Marker and Border Detail for Guide Signs	07/11/08	TE-31 ●	Pavement Alphabets, Numbers and Symbols	07/11/08
			H-01E	Catch Basin Sections	05/31/07	TE-12A	Route Sign Assemblies	07/11/08	TE-32	Type I and II Traffic Signal System Misc. Details	05/31/07
B-12B	Pile Interaction Diagram	05/31/07	H-02A	Type A1 Catch Basin	05/31/07	TE-13 ●	Street Name Sign on Mast Arm	07/11/08	TE-33	Type II Traffic Signal System	08/16/06
B-13	Prestressed Concrete Pile Build-up Details	05/31/07	H-02B	Type B2 Catch Basin	05/31/07	TE-14 ●	Miscellaneous Reflector Markers	07/11/08	TE-33A1	Type II Traffic Signal Standard	05/31/07
D-01	Cattle Gate	05/31/07	H-02C	Type C1 Catch Basin	05/31/07	TE-15 ●	Object Markers	07/11/08	TE-33A2	Type II Traffic Signal Standard	05/31/07
			H-02D	Type D1 Catch Basin	05/31/07	TE-16 ●	Mile Posts	07/11/08	TE-34	Loop Detector Details	07/11/08
D-02	Chain Link Fence with Toprail	05/31/07	H-02E	Catch Basin Section	05/31/07	TE-17A	Cantilever Overhead Sign Elevation and Details	05/31/07	TE-35	Loop Detectors and Duct Details	07/11/08
D-03	Chain Link Fence without Toprail	05/31/07	H-03	Type A, B, and C Storm Drain Manhole	05/31/07	TE-17B	Cantilever Sign Frame Detail and Section	05/31/07	TE-36	Traffic Signal Details	07/11/08
D-04	Wire Fence with Metal Posts	05/31/07	H-04	Type D Storm Drain Manhole	05/31/07	TE-17C	Cantilever Sign Frame Detail	05/31/07	TE-37	Pullbox and Cover Details	07/11/08
D-05	Typical Details of Curbs and/or Gutters	05/31/07	H-05 ●	Typical Reinforcing Details for Drainage Structures	05/31/07	TE-17D	Cantilever Sign Frame Section	05/31/07	TE-37A	Type "A" Traffic Pullbox	05/31/07
D-06	Typical Detail of Reinforced Concrete Drop Driveway	05/31/07	H-06 ●	Typical Reinforcing Details for Drainage Structures	05/31/07	TE-17E	Cantilever Sign Frame Detail	05/31/07	TE-37B	Type "A" Traffic Pullbox Reinforcing	05/31/07
D-07	Centerline and Reference Survey Monuments	05/31/07	H-07	Catch Basin and Manhole Castings	05/31/07	TE-18A	Two Post Overhead Sign Frame Elevations	05/31/07	TE-37C	Type "B" Traffic Pullbox	05/31/07
D-08	Street Survey Monument	05/31/07	H-08	Type 1A-9 and 1A-9P Grated Drop Inlet	05/31/07	TE-18B	Two Post Sign Framing Plan Section	05/31/07	TE-37D	Type "B" Traffic Pullbox Reinforcing	05/31/07
D-15	Concrete Sidewalk	05/31/07	H-09	Type 2A-9 and 2A-9P Grated Drop Inlet	05/31/07	TE-18C	Two Post Sign Framing Sections and Details	05/31/07	TE-37E	Type "B" Traffic Pullbox Foundation	05/31/07
D-16	P.C.C. Bus Pad	05/31/07	H-10	Type A-9 or A-9P Steel Frames	05/31/07	TE-18D	Two Post Sign Frame Details	05/31/07	TE-37F	Type "C" Traffic Pullbox	05/31/07
D-17	P.C.C. Bus Pad	05/31/07	H-11	Type A-9 and A-9P Steel Grates	05/31/07	TE-18E	Two Post Sign Frame Details	05/31/07	TE-37G	Type "C" Traffic Pullbox Reinforcing	05/31/07
D-18	P.C.C. Pavement Layout	05/31/07	H-12	Type 61614P and 1211214P Grated Drop Inlet	05/31/07	TE-19A	Overhead Sign Framing Schedule	05/31/07	TE-37H	Type "C" Traffic Pullbox Foundation	05/31/07
D-19	P.C.C. Pavement with Permeable Base Joint Details	05/31/07	H-13	Type 61616P and 1211216P Grated Drop Inlet	05/31/07	TE-19B	Sign Post Drilled Shaft Foundation	05/31/07	TE-37J	Traffic Pullbox Cover and Details	05/31/07
D-20	P.C.C. Pavement with Permeable Base Joint Details	05/31/07	H-14	Type 61214P Grated Drop Inlet	05/31/07	TE-19C	Spread Footing	05/31/07	TE-38	Type III Traffic Signal Standard	05/31/07
D-21	P.C.C. Longitudinal Joint Details	05/31/07	H-15	Type 1211214, 1211214P, 1211216, 1211216P Steel Frame and Grates	05/31/07	TE-19D	Sign Frame Foundation Schedule	05/31/07	TE-38A1	Type III Traffic Signal Standard	05/31/07
D-22	P.C.C. Connection to Curbs and Gutters	05/31/07	H-16	Type 61614, 61614P, 61616, 61616P Steel Frame and Grates	05/31/07	TE-19D.1	Sign Frame Foundation Schedule	05/31/07	TE-38A2	Type III Traffic Signal Standard	05/31/07
D-23	Joints	05/31/07	H-17	Type 61214 Steel Frames and Grates	05/31/07	TE-19D.2	Sign Frame Foundation Schedule	05/31/07	TE-39	Metal Guardrail Connection to Concrete Barrier	07/11/08
L-01	Tree Planting	08/16/06	H-18	Type 61214 Steel Frames and Grates	05/31/07	TE-19D.3	Sign Frame Foundation Schedule	05/31/07	TE-40	Concrete Barrier Transition	05/31/07
L-02	Tree Planting	08/16/06	H-19	Type 61214p Steel Grates	05/31/07	TE-19D.4	Sign Frame Foundation Schedule	05/31/07	TE-40A	Concrete Barrier Transition	05/31/07
L-03	Tree Transplanting	08/16/06	H-20	Type 61614b Steel Frame and Grates	05/31/07	TE-19D.5	Sign Frame Foundation Schedule	05/31/07	TE-41	Sections Guardrail Type 4 (Rigid Barrier)	05/31/07
L-04	Palm Planting	08/16/06	H-21 ●	Concrete and Cement Rubble Masonry Structures	05/31/07	TE-19E	Anchorage Details	05/31/07	TE-42 ●	Portable Concrete Barrier	05/31/07
L-05	Shrub Planting	08/16/06	H-22 ●	Concrete and Cement Rubble Masonry Structures	05/31/07	TE-19F	Anchorage Details	05/31/07	TE-43 ●	Portable Concrete Barrier	05/31/07
L-06	Landscape Details	08/16/06	H-23 ●	Inlet/Outlet Structure	05/31/07	TE-19G	Miscellaneous Sign Frame Details	05/31/07	TE-44 ●	Guardrail Type 4 Miscellaneous Details	07/11/08
L-07	Landscape Details	08/16/06	H-24	Inlet/Outlet Structure	05/31/07	TE-19H	Luminaire Walkway Support	05/31/07	TE-45 ●	Barricades	07/11/08
L-08	Landscape Details	08/16/06	H-25	Flared End Section for Culverts	05/31/07	TE-19J	Fixed Message Luminaire Support	05/31/07	TE-46	Delineation and Pavement Markings at Narrow Bridges	07/11/08
L-09	Landscape Details	08/16/06	H-26	Flared End Section for Culverts	05/31/07	TE-19K	Miscellaneous Sign Details	05/31/07	TE-47	Highway Light Standard	05/31/07
L-10	Landscape Details	08/16/06	H-27	Concrete Spillway Inlet	05/31/07	TE-19L	Miscellaneous Sign Details	05/31/07			
L-11	Planting Notes	08/16/06	H-28	Cap Coupling Details Standard Joint	05/31/07	TE-19M	Miscellaneous Sign Frame Details	05/31/07			
L-12	Irrigation Details	08/16/06	H-29	Reinforced Concrete Collar & Jacket	05/31/07	TE-20	Supports for Ground Mounted Guide Sign	05/31/07			
L-13	Irrigation Details	08/16/06	H-30	Underdrain Cleanout Steel Frame and Cover	05/31/07	TE-20A	Supports for Ground Mounted Guide Sign	05/31/07			
L-14	Irrigation Details	08/16/06		Underdrain Connection to Drainage Structure	05/31/07	TE-20B	Supports for Ground Mounted Guide Sign	05/31/07			
L-15	Irrigation Details	08/16/06	TE-01 ●	Sign Height and Location	07/11/08	TE-20C	Supports for Ground Mounted Guide Sign	05/31/07			
L-16	Irrigation Details	08/16/06	TE-1A ●	Sign Installation	07/11/08	TE-21A	Sign Breakaway Mounts	05/31/07			
L-17	Irrigation Details	08/16/06	TE-02A ●	Galvanized Flanged Channel Sign Post Mounting	05/31/07	TE-21B	Sign Breakaway Mounts	05/31/07			
L-18	Irrigation Details	08/16/06	TE-02B ●	Galvanized Flanged Channel Sign Post Mounting	05/31/07	TE-22	Laminated Aluminum Sign Panels (Overhead)	05/31/07			
L-19	Irrigation Details	08/16/06	TE-02C ●	Galvanized Flanged Channel Sign Post Mounting	05/31/07	TE-23	Laminated Aluminum Sign Panels (Ground Mounted)	07/11/08			
L-20	Irrigation Details	08/16/06	TE-03A ●	Galvanized Square Tube Sign Post Mounting	05/31/07	TE-24	Solid Aluminum Extruded Sign Panel and Accessory Details	05/31/07			
L-21	Irrigation Details	08/16/06	TE-03B ●	Galvanized Square Tube Sign Post Mounting	05/31/07	TE-25	Guide Signs Luminaire Mountings	05/31/07			
L-22	Irrigation Details	08/16/06	TE-04 ●	Regulatory Signs	07/11/08	TE-26 ●	Raised Pavement Markers and Striping	07/11/08			
L-23	Irrigation Details	08/16/06	TE-05 ●	Warning Signs	07/11/08	TE-27 ●	Raised Pavement Markers and Striping	07/11/08			
L-24	Irrigation Notes	08/16/06	TE-06	Miscellaneous Signs	07/11/08	TE-28	Entrance and Exit Pavement Markings	07/11/08			
			TE-07 ●	Construction Signs	07/11/08	TE-28A	Entrance and Exit Pavement Markings	07/11/08			
			TE-08 ●	Miscellaneous Intersection Signs	07/11/08						

NOTE:
STANDARD PLANS APPLICABLE TO THIS PROJECT ARE INDICATED BY A " ● " NEXT TO THE STANDARD PLAN NO. (FOR EXAMPLE: D-07 ●)



THIS WORK WAS PREPARED BY ME OR UNDER MY SUPERVISION.
WILSON OKAMOTO CORPORATION
APRIL 30, 2024
LIC. EXP. DATE

STATE OF HAWAII
DEPARTMENT OF TRANSPORTATION
HIGHWAYS DIVISION

STANDARD PLANS SUMMARY

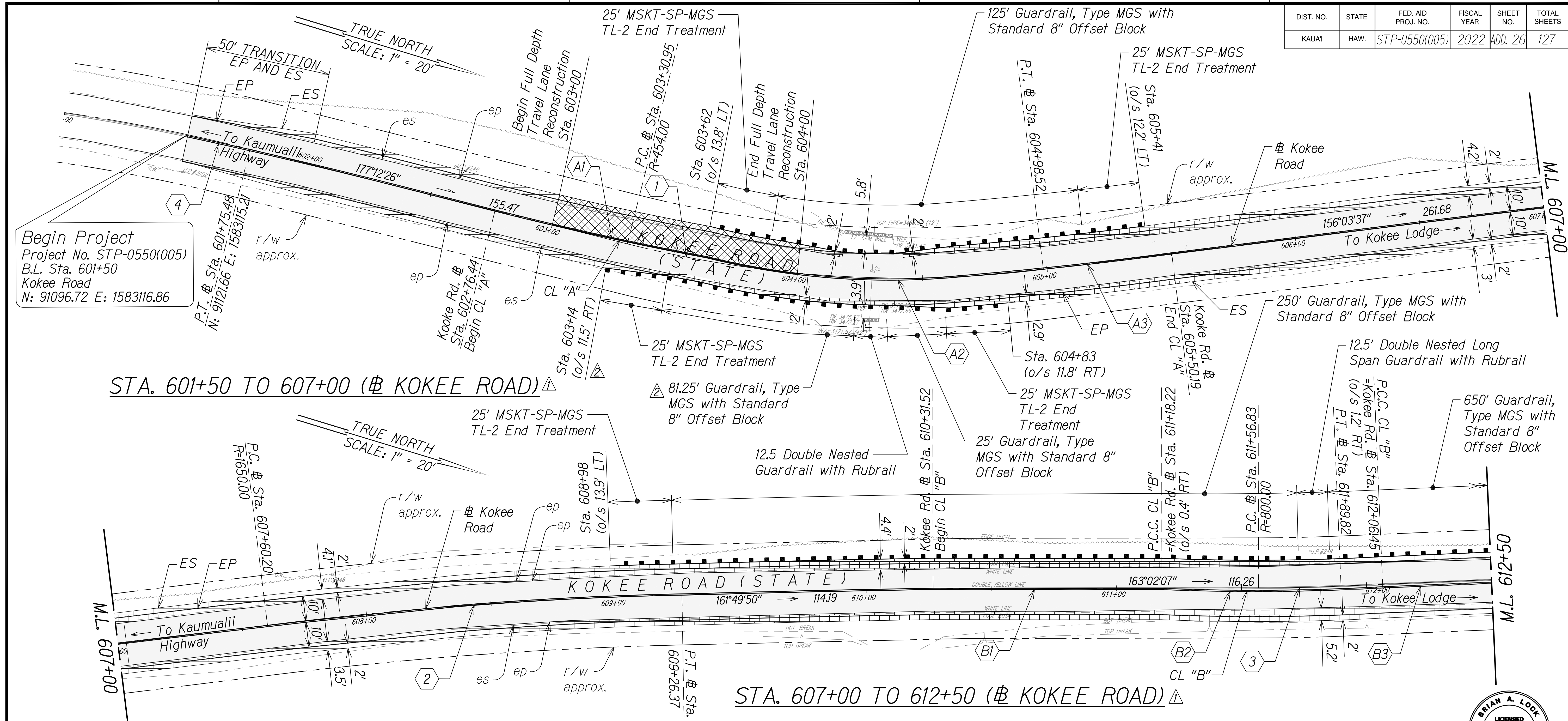
WAIMEA CANYON DRIVE /
KOKEE ROAD IMPROVEMENTS, PHASE 2A
MILE POST 11.5 TO MILE POST 14.0
Federal-Aid Project No. STP-0550(005)
Scale: None Date: August 2022

SHEET No. 1 OF 1 SHEETS

DATE	REVISION
11/10/22	Revised Standard Plan Summary
11/07/22	Revised Engineer's Stamp

SURVEY PLOTTED BY _____ DATE _____
 DESIGNED BY _____
 TRACED BY _____
 QUANTITIES BY _____
 CHECKED BY _____
 ORIGINAL PLAN NO. _____

DIST. NO.	STATE	FED. AID PROJ. NO.	FISCAL YEAR	SHEET NO.	TOTAL SHEETS
KAUAI	HAW.	STP-0550(005)	2022	ADD. 26	127



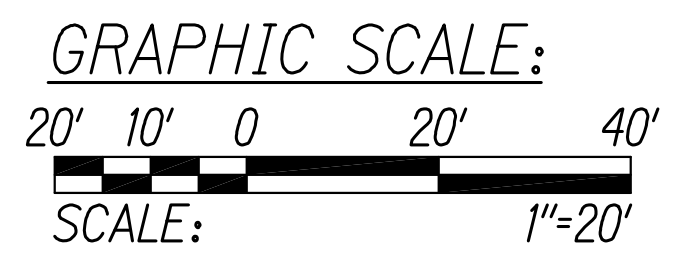
Begin Project
 Project No. STP-0550(005)
 B.L. Sta. 601+50
 Kokee Road
 N: 91096.72 E: 1583116.86

STA. 601+50 TO 607+00 (# KOKEE ROAD) Δ

STA. 607+00 TO 612+50 (# KOKEE ROAD) Δ

Δ Legend:

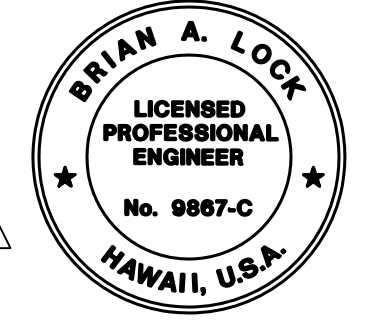
- Shoulder Widening Pavement
- Full Depth Travel Lane Pavement
- 2" AC Pavement Cold Plane and Overlay
- Guardrail



	# Kokee Road Curve Data				CL "A" Curve Data Δ			CL "B" Curve Data Δ		
	1	2	3	4	A1	A2	A3	B1	B2	B3
Δ	2°08'49"	5°46'13"	2°21'46"	2°09'22"	3°37'28"	18°03'33"	3°04'43"	0°13'34"	5°33'02"	0°02'17"
Δ/2	10°34'24"	2°53'06"	1°10'53"	1°04'41"	1°48'44"	8°01'47"	1°32'22"	0°06'47"	2°46'31"	0°01'08"
R	454'	1650'	800'	2394'	1371.92'	303.87'	1697.06'	21976.48'	911.37'	135960.18'
T	84.75'	83.16'	16.50'	13.98'	43.41'	48.29'	45.60'	43.35'	44.18'	45.06'
C	166.61'	166.10'	32.99'	90.08'	86.77'	95.38'	91.17'	86.70'	88.26'	90.13'
L _C	167.56'	166.17'	32.99'	90.11'	86.79'	95.38'	91.18'	86.70'	88.29'	90.13'

Note:
 1. Any head or wing walls of the existing culverts within the project area unexpectedly affected by the project shall be repaired or reconstructed using the same method of construction to reflect the type and period of the original.

DATE	REVISION
11/10/22	Revised Guardrail Labels
11/07/22	Revised Roadway Properties; Revised Engineer's Stamp



THIS WORK WAS PREPARED BY ME OR UNDER MY SUPERVISION.
 WILSON OKAMOTO CORPORATION
 APRIL 30, 2024
 LIC. EXP. DATE

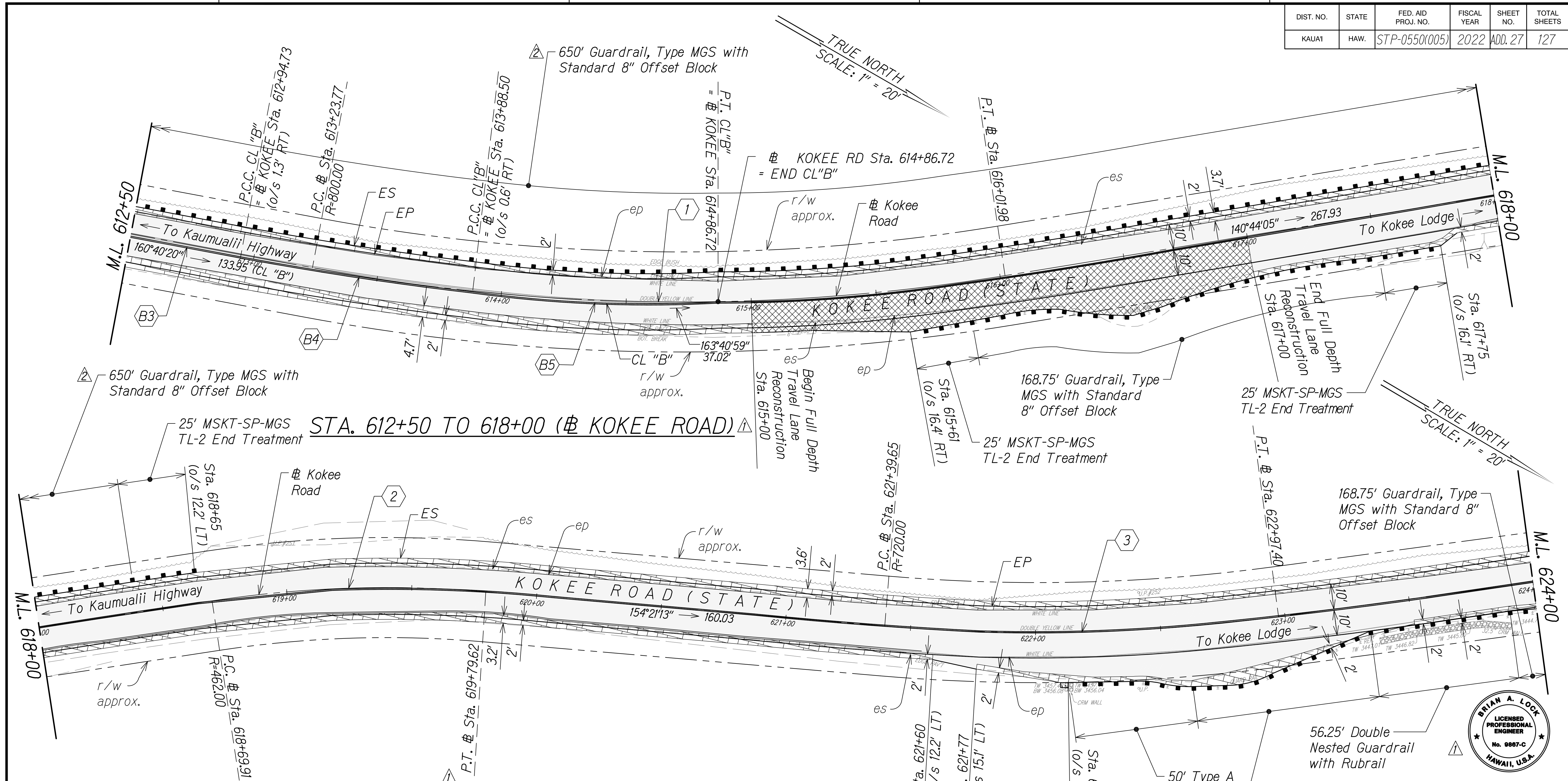
STATE OF HAWAII
 DEPARTMENT OF TRANSPORTATION
 HIGHWAYS DIVISION

ROADWAY PLAN

WAIMEA CANYON DRIVE /
 KOKEE ROAD IMPROVEMENTS, PHASE 2A
 MILE POST 11.5 TO MILE POST 14.0
 Federal-Aid Project No. STP-0550(005)
 Scale: 1" = 20' Date: August 2022

SHEET No. 1 OF 13 SHEETS

DIST. NO.	STATE	FED. AID PROJ. NO.	FISCAL YEAR	SHEET NO.	TOTAL SHEETS
KAUAI	HAW.	STP-0550(005)	2022	ADD. 27	127

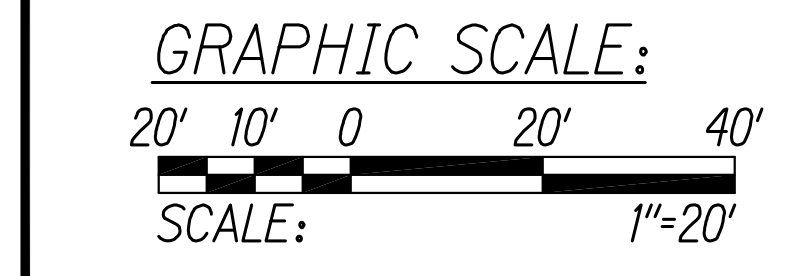


Kokee Road Curve Data			CL "B" Curve Data			
	1	2	B3	B4	B5	
Δ	19°55'31"	13°36'23"	12°33'11"	0°02'17"	3°43'28"	10°54'34"
Δ/2	9°57'46"	6°48'12"	6°16'36"	0°01'08"	1°51'44"	5°27'17"
R	800'	462'	720'	135960.18'	1414.9'	516.60'
T	140.52'	55.12'	79.19'	45.06'	46'	49.33'
C	276.81'	109.46'	157.43'	90.13'	91.96'	98.22'
LC	278.21'	109.71'	157.75'	90.13'	91.97'	98.36'

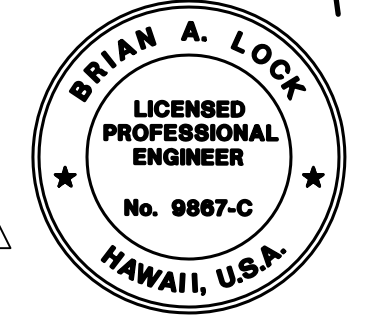
STA. 618+00 TO 624+00 (# KOKEE ROAD)

- Legend:**
- Shoulder Widening Pavement
 - Full Depth Travel Lane Pavement
 - 2" AC Pavement Cold Plane and Overlay
 - Guardrail

Note:
 1. Any head or wing walls of the existing culverts within the project area unexpectedly affected by the project shall be repaired or reconstructed using the same method of construction to reflect the type and period of the original.



SURVEY PLOTTED BY _____ DATE _____
 DESIGNED BY _____
 QUANTITIES BY _____
 CHECKED BY _____
 ORIGINAL PLAN _____
 NOTE BOOK _____
 No. _____



THIS WORK WAS PREPARED BY ME OR UNDER MY SUPERVISION.
 WILSON OKAMOTO CORPORATION
 APRIL 30, 2024
 LIC. EXP. DATE

STATE OF HAWAII
 DEPARTMENT OF TRANSPORTATION
 HIGHWAYS DIVISION

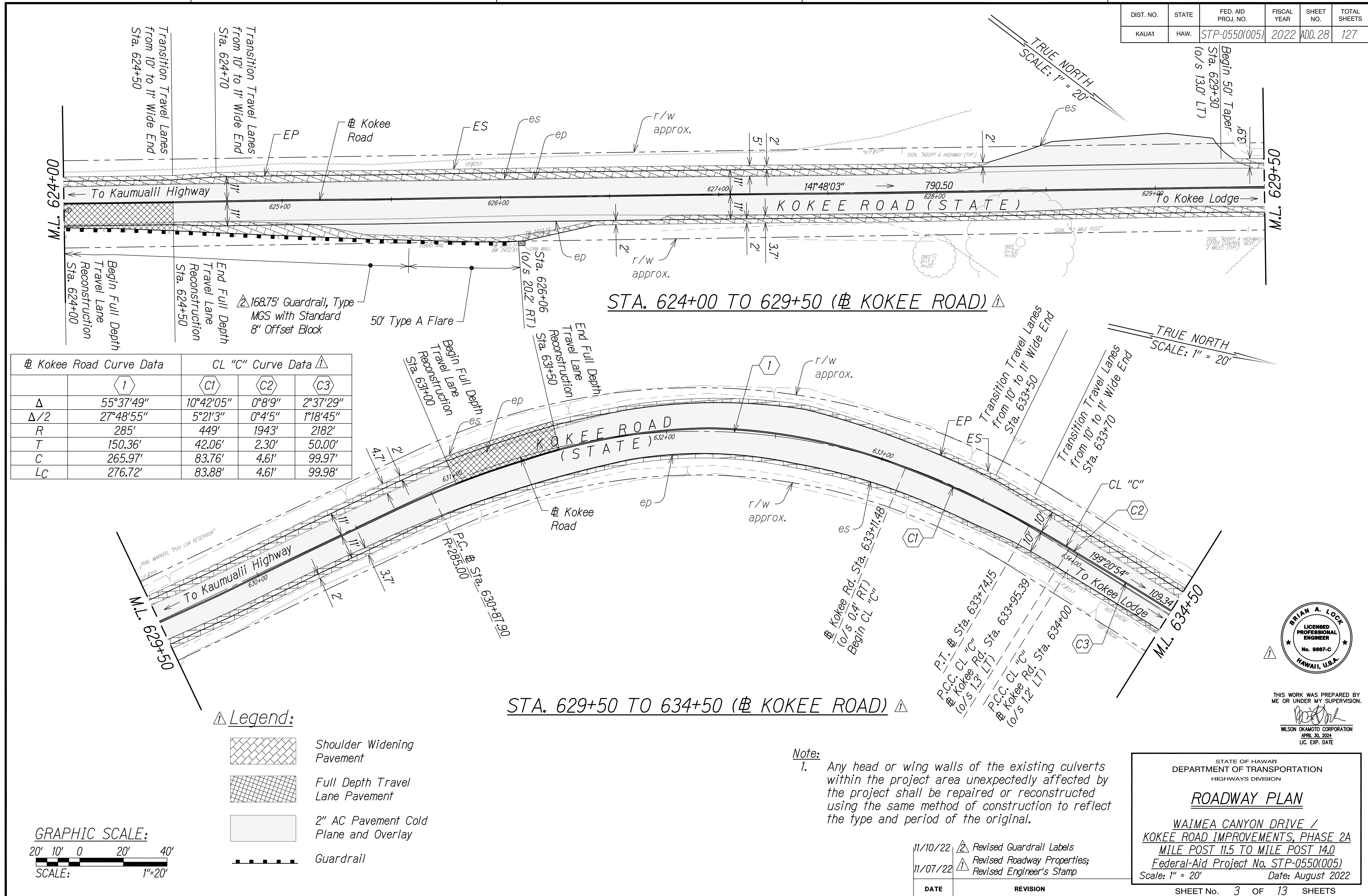
ROADWAY PLAN

WAIMEA CANYON DRIVE /
 KOKEE ROAD IMPROVEMENTS, PHASE 2A
 MILE POST 11.5 TO MILE POST 14.0
 Federal-Aid Project No. STP-0550(005)
 Scale: 1" = 20' Date: August 2022

DATE: 11/10/22 REVISION: Revised Guardrail Labels
 11/07/22 Revised Roadway Properties;
 Revised Engineer's Stamp

SHEET No. 2 OF 13 SHEETS

DIST. NO.	STATE	FED. AID PROJ. NO.	FISCAL YEAR	SHEET NO.	TOTAL SHEETS
KAUAI	HAW.	STP-0550(005)	2022	ADD. 28	127



Kokee Road Curve Data		CL "C" Curve Data			
	1	C1	C2	C3	
Δ	55°37'49"	10°42'05"	0°8'9"	2°37'29"	
Δ/2	27°48'55"	5°21'3"	0°4'5"	1°18'45"	
R	285'	449'	1943'	2182'	
T	150.36'	42.06'	2.30'	50.00'	
C	265.97'	83.76'	4.61'	99.97'	
LC	276.72'	83.88'	4.61'	99.98'	

- Legend:**
- Shoulder Widening Pavement
 - Full Depth Travel Lane Pavement
 - 2" AC Pavement Cold Plane and Overlay
 - Guardrail



Note:
 1. Any head or wing walls of the existing culverts within the project area unexpectedly affected by the project shall be repaired or reconstructed using the same method of construction to reflect the type and period of the original.

DATE	REVISION
11/10/22	Revised Guardrail Labels
11/07/22	Revised Roadway Properties; Revised Engineer's Stamp

STATE OF HAWAII
 DEPARTMENT OF TRANSPORTATION
 HIGHWAYS DIVISION

ROADWAY PLAN

WAIMEA CANYON DRIVE /
 KOKEE ROAD IMPROVEMENTS, PHASE 2A
 MILE POST 11.5 TO MILE POST 14.0
 Federal-Aid Project No. STP-0550(005)
 Scale: 1" = 20' Date: August 2022

SHEET No. 3 OF 13 SHEETS



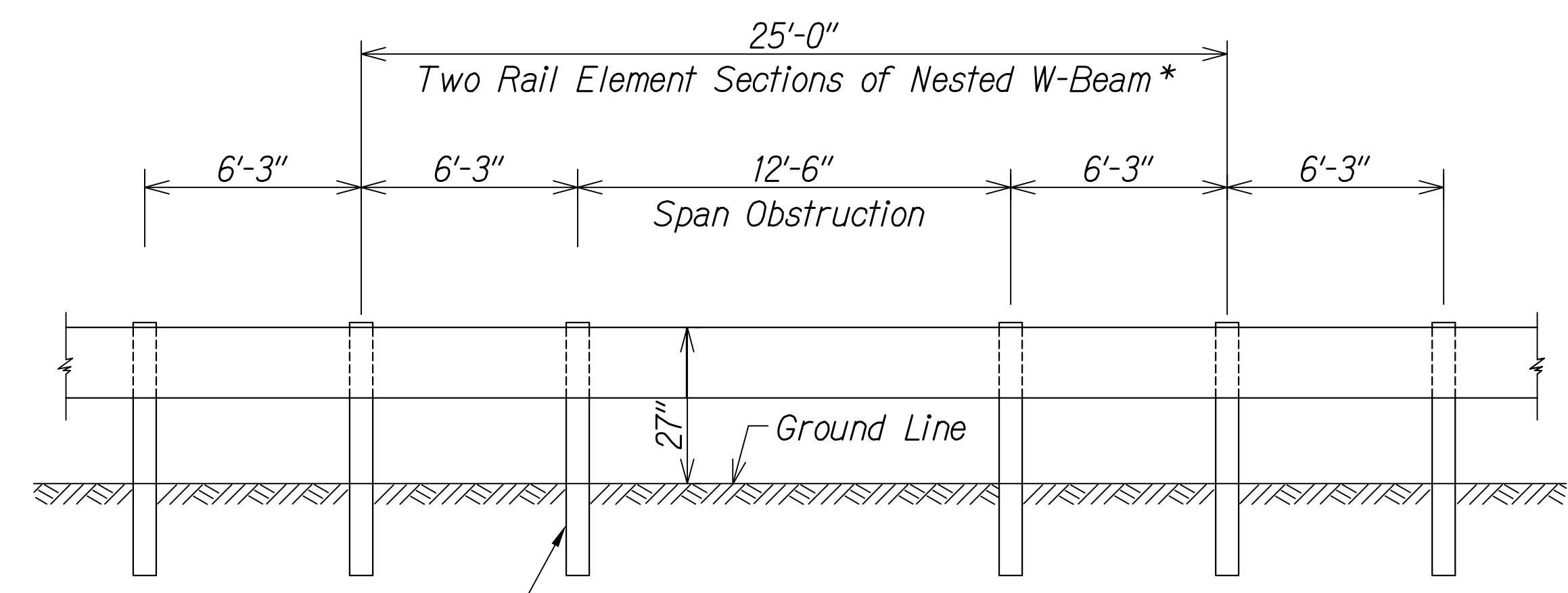
THIS WORK WAS PREPARED BY ME OR UNDER MY SUPERVISION.

Brian A. Lock
 WILSON OKAMOTO CORPORATION
 APRIL 30, 2024
 LIC. EXP. DATE

SURVEY PLOTTED BY	DATE
DESIGNED BY	
QUANTITIES BY	
CHECKED BY	
NOTE BOOK	
No.	

DIST. NO.	STATE	FED. AID PROJ. NO.	FISCAL YEAR	SHEET NO.	TOTAL SHEETS
KAUAI	HAW.	STP-0550(005)	2022	ADD.78S-1	127

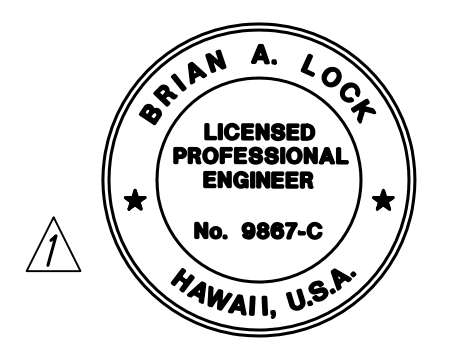
*Note: All nested W-Beam splice points shall be staggered.



See Double Nested Steel Post Guardrail with Rubrail detail on ADD. 76, Typ.

(SPLICE IN CENTER OF 12'-6" SPACING)
DOUBLE NESTED LONG SPAN STRONG POST
W-BEAM GUARDRAIL OVER 12'-6" SPAN
(MAXIMUM DYNAMIC DEFLECTION OF 3.1 FT.)

ORIGINAL PLAN	DATE
SURVEY PLOTTED BY	
DESIGNED BY	
QUANTITIES BY	
CHECKED BY	
NOTE BOOK	
No.	



THIS WORK WAS PREPARED BY ME OR UNDER MY SUPERVISION.
Brian A. Lock
WILSON OKAMOTO CORPORATION
APRIL 30, 2024
LIC. EXP. DATE

STATE OF HAWAII
DEPARTMENT OF TRANSPORTATION
HIGHWAYS DIVISION
GUARDRAIL DETAILS
WAIMEA CANYON DRIVE /
KOKEE ROAD IMPROVEMENTS, PHASE 2A
MILE POST 11.5 TO MILE POST 14.0
Federal-Aid Project No. STP-0550(005)
Scale: None Date: August 2022

DATE	REVISION
11/10/22	New Sheet

SHEET No. 6A OF 6 SHEETS

COPY OF ORIGINAL TRACING

ADD 78 S-1